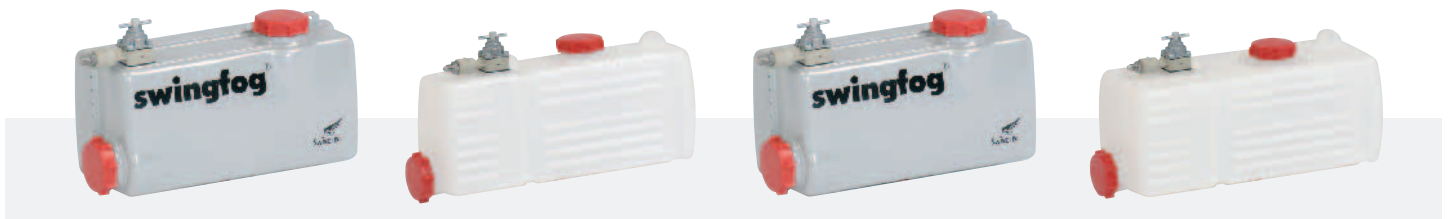


**SN 50**

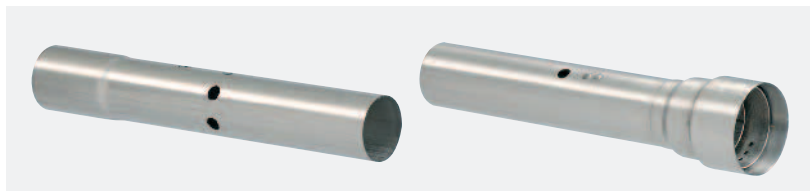


Chemical tank, stainless steel, capacity 6.5 l, SWINGFOG SN 50

Chemical tank, polyethylene, capacity 7 l, SWINGFOG SN 50 PE

Chemical tank, stainless steel, capacity 9 l, SWINGFOG SN 50-10

Chemical tank, polyethylene, capacity 10 l, SWINGFOG SN 50-10 PE



Standard fogging tube for oil- based fogging mixtures

High performance fogging tube for water-based fogging mixtures only

**TECHNOLOGY FOR PROFESSIONALS**

Swingfog – the optimal machines for Vector and Pest Control. Plant Protection in Greenhouses and Plantations. Disinfection in Food Processing and Animal Production. Stock Protection in Warehouses. Anti-Sprouting Treatment of Potatoes.





**swingfog**<sup>®</sup> + fontan<sup>®</sup>  
**QUALITY WINS**



## Technical data

## Swingfog SN 50 (all versions)

|  |  |                 |                  |                    |
|--|--|-----------------|------------------|--------------------|
| <b>Power, combustion chamber</b>   | 18.7 kW/25.4 hp (16,100 kcal/h)  |                 |                  |                    |
| <b>Fuel tank</b>   | approx. 1.4 l  |                 |                  |                    |
| Stainless steel, capacity  | approx. 0.12 bar   |                 |                  |                    |
| Feed pressure  | standard grade petrol, leaded or unleaded, at least 74 octane  |                 |                  |                    |
| Fuel   | approx. 2 l/h  |                 |                  |                    |
| Fuel consumption   |  |                 |                  |                    |
| <b>Chemical tank</b>   | <u>SN 50</u>   | <u>SN 50 PE</u> | <u>SN 50-10</u>  | <u>SN 50-10 PE</u> |
| Capacity   | 6.5 l  | 7.0 l           | 9.0 l            | 10.0 l             |
| Feed pressure  | approx. 0.3 - 0.35 bar (depending on dosage nozzle used)   |                 |                  |                    |
| <b>Ignition</b>  | electronic ignition coil,<br>4 dry batteries 1,5 V/ea. in series, negative on ground (optional accessory)                            |                 |                  |                    |
| <b>Output</b><br>(measured with water, approx.)                          | dosage nozzle 0.7  | 10 l/h          |                  |                    |
|  | dosage nozzle 0.8  | 14 l/h          |                  |                    |
|  | dosage nozzle 0.9  | 17.5 l/h        |                  |                    |
|  | dosage nozzle 1.0  | 20.5 l/h        |                  |                    |
|  | dosage nozzle 1.1  | 23.5 l/h        |                  |                    |
|  | dosage nozzle 1.2  | 27 l/h          |                  |                    |
|  | dosage nozzle 1.4  | 32 l/h          |                  |                    |
|  | dosage nozzle 1.7  | 42 l/h          |                  |                    |
| <b>Dimensions</b>  | SN 50/SN 50 PE:  |                 | 133 x 29 x 33 cm |                    |
|  | SN 50-10/SN 50-10 PE:  |                 | 133 x 34 x 33 cm |                    |
| <b>Weight (empty)</b>  | <u>SN 50</u>   | <u>SN 50 PE</u> | <u>SN 50-10</u>  | <u>SN 50-10 PE</u> |
|  | 8.75 kg  | 8.7 kg          | 9.1 kg           | 9.0 kg             |
| <b>Automatic cut-off device</b>  | all versions can also be supplied with factory-mounted cut-off device for the fogging mixture  |                 |                  |                    |
|  |   |                 |                  |                    |
| <b>Special model Swingfog SN 50 A</b>                                    | special factory-mounted fog outlet to be introduced in very small holes in the ground (control of leaf-cutting ants) or in buildings |                 |                  |                    |
| available with all chemical tank versions with or without cut-off device |   |                 |                  |                    |
| <b>Standard accessories</b>  | for all versions   |                 |                  |                    |
|  | fogging tube   |                 |                  |                    |
|  | dosage nozzles 0.8 / 1.0 / 1.2 (nozzle 1.0 already installed)  |                 |                  |                    |
|  | fuel funnel with strainer (mesh width 0.1 mm)  |                 |                  |                    |
|  | chemical funnel with strainer (mesh width 0.1 mm)  |                 |                  |                    |
|  | tool kit   |                 |                  |                    |
|  | cleaning equipment   |                 |                  |                    |
|  | set of spares (gaskets, O-rings, diaphragms)   |                 |                  |                    |
|  | carrying strap   |                 |                  |                    |
|  | ear protection (2 sets)  |                 |                  |                    |
|  | instruction manual including spare parts list  |                 |                  |                    |
| <b>Optional accessories</b>  | (available at extra charge)  |                 |                  |                    |
| for all versions   | Dosage nozzles   |                 |                  |                    |
|  | 0.7 / 0.9 / 1.1 / 1.4 / 1.7  |                 |                  |                    |
| High performance fogging tube (solely for water-based fogging mixtures)  | to optimize the droplet spectrum,<br>no deposits of larger drops in front of the unit  |                 |                  |                    |
| Silencer   | all versions   |                 |                  |                    |
| Manometer set  | for workshop use   |                 |                  |                    |

Subject to technical modifications.